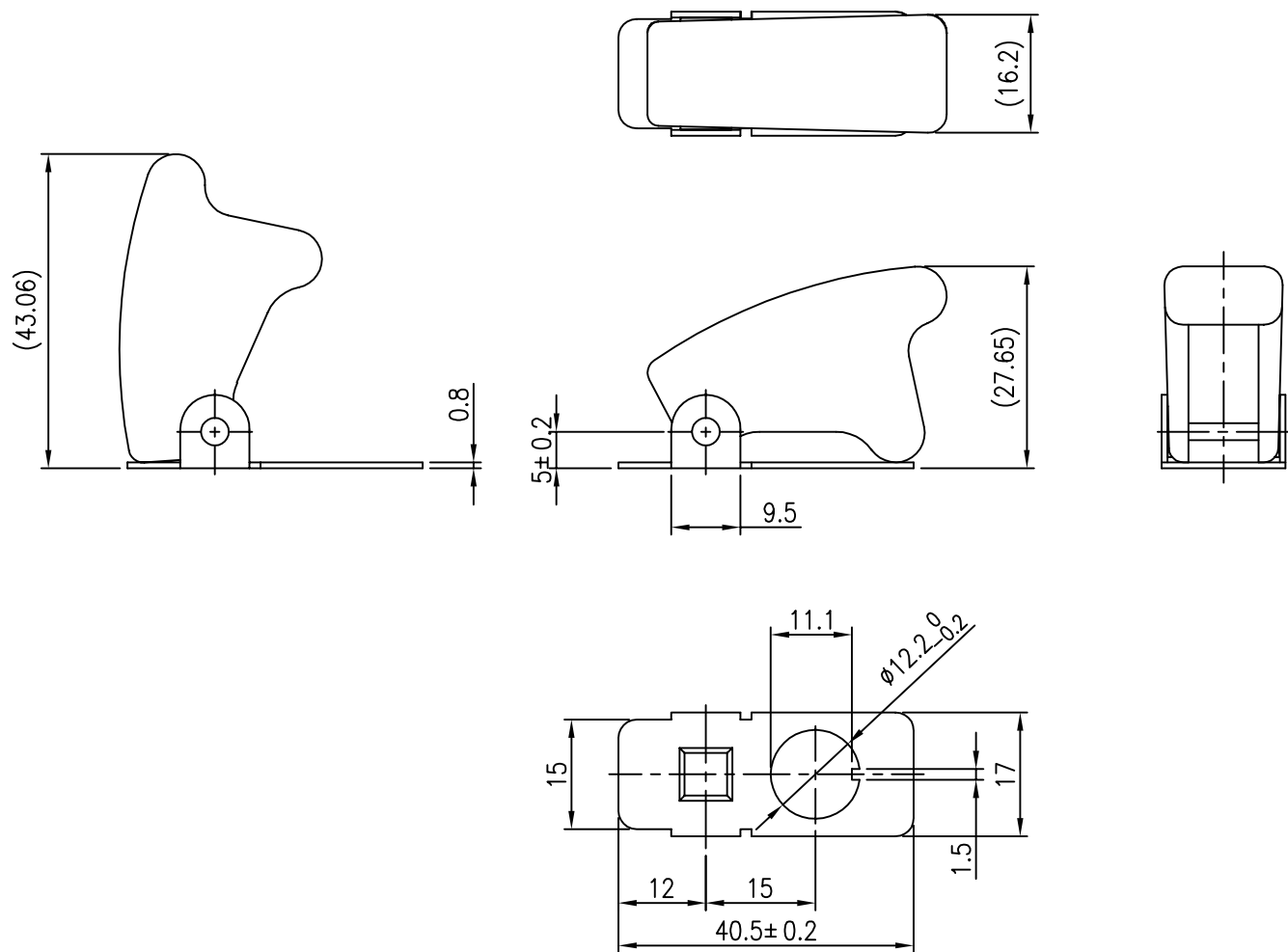


Part name: Safety cover
 Face plate is steel, with black glossy finish. Spring-loaded switch cover is ABS, Red.
 Mounting hole diameter: 12.2 (0.481"). Accepts switches with standard 12.0mm or 15/32" diameter mounting stems.
 Accepts standard 17.5mm (11/16") switch handles.



TOLERANCE: ±0.1mm UNLESS OTHERWISE SPECIFIED.

									△
									△
Date	Name	Description							NO
Drawn	Checked	Approved	SCI BOM No.	1130277	Model Name	SAFETY COVER			
曹 盈 芳		王 佰 山	Customer No.		Model No.	SR17-10B	REV.		
07/26/'10		07/26/'10	Unit	mm	SWEETA PRODUCTS CORPORATION				0