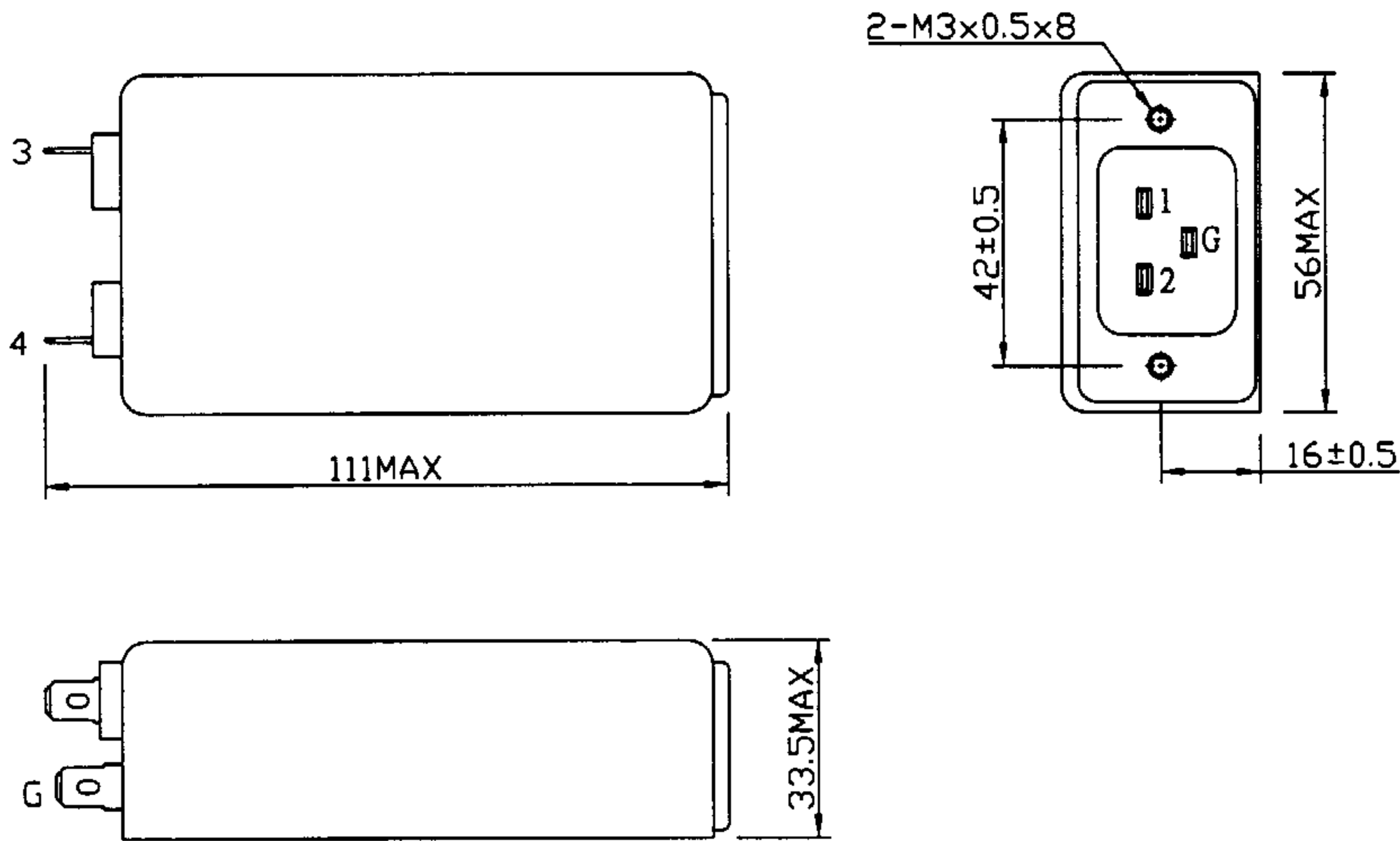


SPECIFICATION FOR APPROVAL

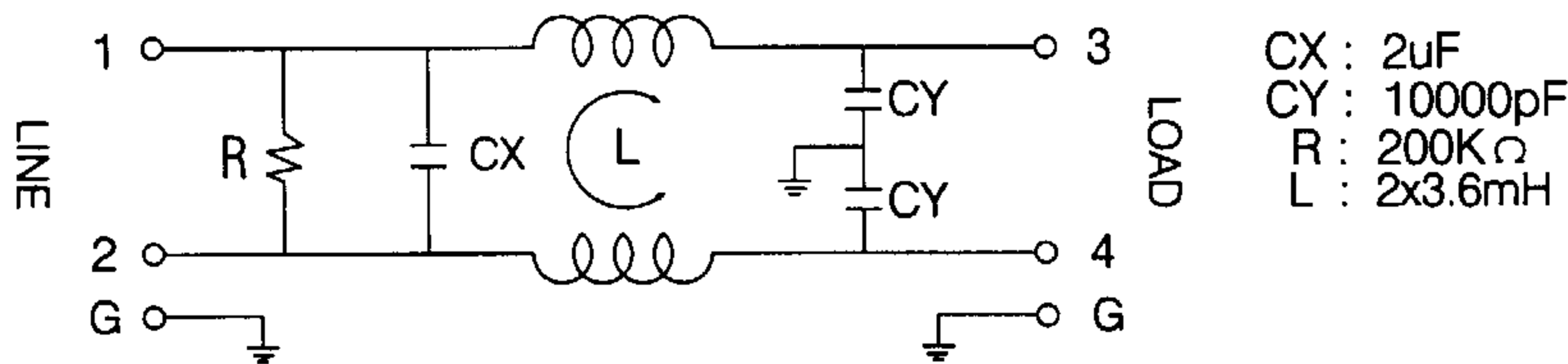
TO:

|           |            |                  |             |
|-----------|------------|------------------|-------------|
| PART NAME | EMI FILTER | YUNPEN SAMPLE NO | FTA-0022    |
| MODEL     | SEYM16T1   | SAMPLE DATE      | DEC.03.2001 |
| USED NO   |            | OUR DRAWING NO   | DR-00006    |

1. PHYSICAL DIMENSIONS:(mm)



2. SCHEMATIC:



|                       |                       |             |        |  |
|-----------------------|-----------------------|-------------|--------|--|
| REPORTEDD             | CHECKED BY            | APPROVED BY | 3      |  |
| 工程部<br>90.12.3<br>鄭秀金 | 工程部<br>90.12.3<br>王張省 |             | 2      |  |
|                       |                       |             | REV. 1 |  |

# SPECIFICATION FOR APPROVAL

TO:

|           |            |                |             |
|-----------|------------|----------------|-------------|
| PART NAME | EMI FILTER | SAMPLE NO      | FTA-0022    |
| MODEL     | SEYM16T1   | SAMPLE DATE    | DEC.03.2001 |
| USED NO   |            | OUR DRAWING NO | DR-00006    |

3.ELECTRICAL CHARACTERISTICS:

3-1.RATED VOLTAGE ..... 125/250VAC

3-2.RATED CURRENT .....16 A

3-3.OPERATING FREQUENCY ..... 50/60Hz

3-4.LEAK CURRENT:EACHLINE TO GROUND

250VAC 50Hz ..... 2.3mA MAX

3-5.HIPOT RATING:(FOR ONE MINUTE)



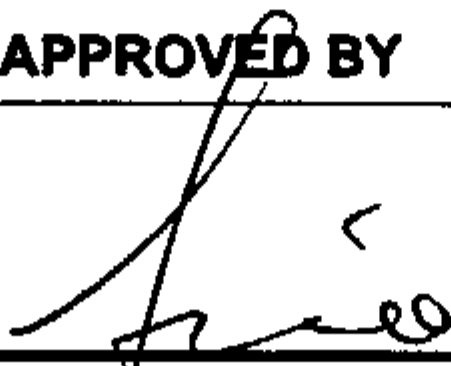
LINE TO LINE ..... 1450VDC

LINE TO GROUND ..... 2250VDC

3-6.INSULATION RESISTANCE ..... 250VDC/100MOHM MIN

3-7.DIRECT CURRENT RESISTANCE ..... 0.1 OHM MAX

3-8.OPERATING TEMPERATURE .....-25 TO +85° C

|   |   |  |        |  |
|---|---|--|--------|--|
| REPORTEDD   | CHECKED BY  | APPROVED BY  | 3      |  |
|  |  |  | 2      |  |
|   |   |  | REV. 1 |  |