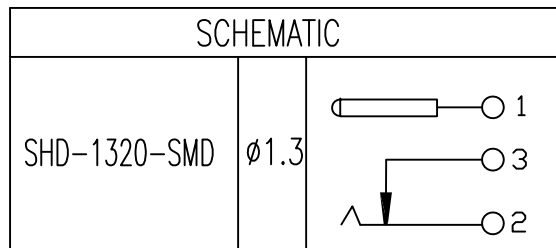
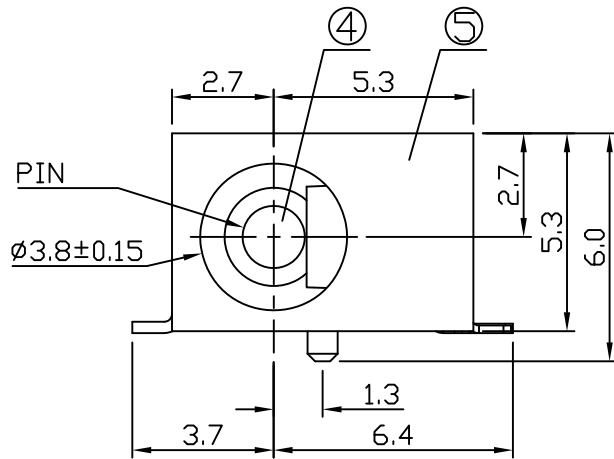
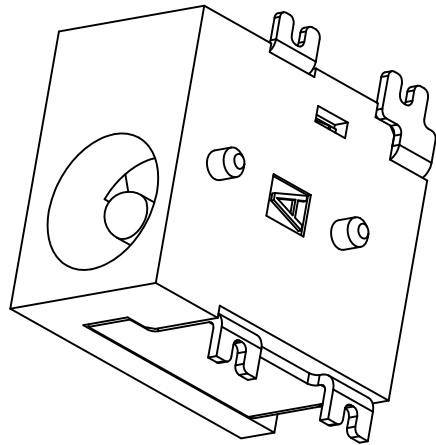
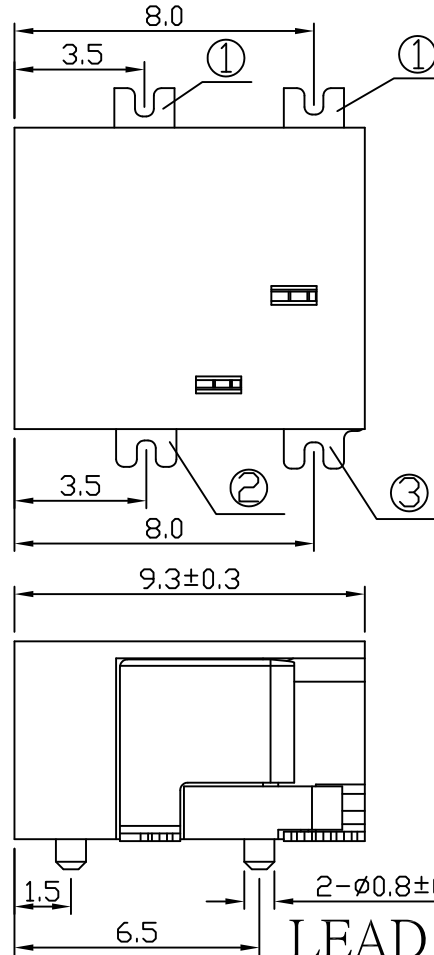


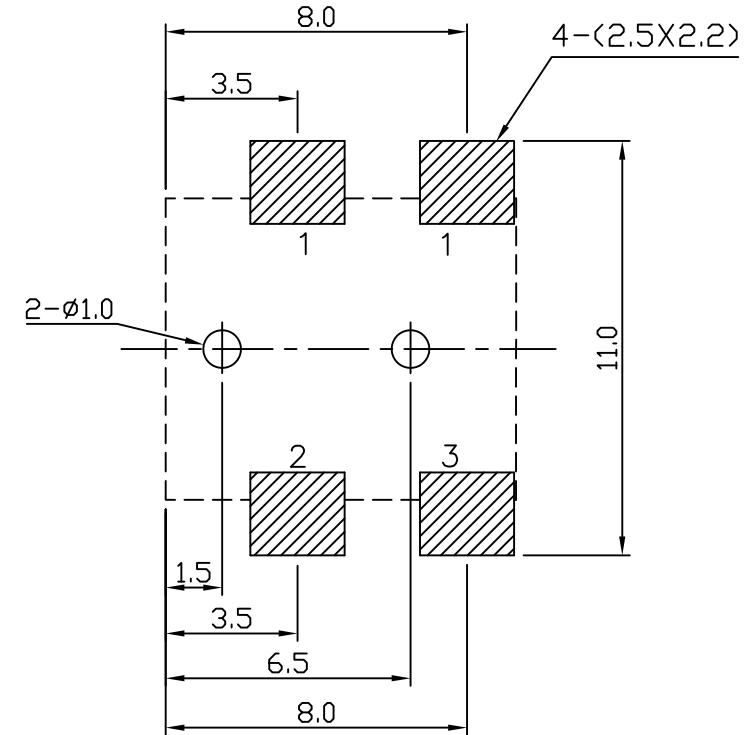
* REVISIONS				
LTR	DESCRIPTION	DATE	REVISED	APPROVED



UNLESS OTHERWISE SPECIFIED, TOLERANCE ON DECIMAL: ±0.2



LEAD FREE



T:1.6 Dimensions of PC board holes  
Tolerance : ±0.05(Printed-top view)

5	HOUSING	1	PA9T	UL-94V0(BLACK)
4	PIN	1	H59(COPPER ALLOY)	Cu/Sn PLATED
3	TERMINAL 3#	1	C2680 t=0.25	Ag PLATED
2	TERMINAL 2#	1	SUS301 t=0.25	Ag PLATED
1	TERMINAL 1#	1	C2680 t=0.30	Ag PLATED
LTR	PART NAME	QTY	MATERIAL	REMARK
DWN	ANJOU	DATE	2013.05.22	3RD ANGLE PROJECTION NAME DC POWER JACK CAT. NO. DCS-020-02B DWN.NO. SHD-1320-SMD
CHKD	ANJOU	DATE	2013.05.22	
APVD	ELVIS	DATE	2013.05.22	
SWEETA RPRODUCTS CORPORATION				002

# ***SWEETA PRODUCTS CORPORATION***

## ***SPECIFICATION***

<b>TITLE</b> DC POWER JACK	<b>SPC. NO.</b> SHD-1320-SMD	<b>PAGE : 1 OF 4</b> <b>DATE : 2013.04.08</b>
-------------------------------	---------------------------------	--

### 1.Scope

This specification applies to unified polarity type DC jack used in electronic equipment.  
For DC input use.

### 2.Standard atmospheric conditions

Unless otherwise specified. The standard range of atmospheric condition for making measurements and tests are as follows :

Ambient temperature : 15℃ to 35℃

Relative humidity : 25% to 80%

Air pressure : 86kPa to 106kPa

If there is any doubt about the results, measurements shall be made within the follow limits:

Ambient temperature : 20±2℃

Relative humidity : 60% to 70%

Air pressure : 86kPa to 106kPa

Operating temperature range: -25℃ to 85℃

Storage temperature range: -25℃ to 70℃

### 3.Mechanical characteristics

	Item	Conditions	Specification
1	Insertion force	Measurement shall be made after insertion and withdrawal using standard plug gauge 3 times.	2.94~29.4N ( 0.3~3kgf )
2	Withdrawal force	Measurement shall be made after insertion and withdrawal using standard plug gauge 3 times.	

ISSUE	DATE	WRTN	CHKD	APVD	DESCRIPTIONS
	2013.04.08	JON	JON	ELVIS	

# ***SWEETA PRODUCTS CORPORATION***

## ***SPECIFICATION***

TITLE		SPC. NO.	PAGE : 2 OF 4
DC POWER JACK		SHD-1320-SMD	DATE : 2013.04.08
4.Electrical characteristics			
	Item	Conditions	Specification
1	Rating		DC 24V , 3A
2	Contact resistance	1K Hz Measured at small current (1A or less)	30 m $\Omega$ or less
3	Insulation resistance	A voltage of 500V DC shall be applied for a minute. Between conductors which should not make contact under normal conditions after which measurement shall be made.	100M $\Omega$ MIN.
4	Dielectric strength	Between conductors which should not make contact under normal conditions. 500V AC ( 50 to 60Hz ) for 1 min.(trip current 2mA)	Without distinct damage.
5.Endurance characteristics			
	Item	Conditions	Specification
1	Solderability	The terminals shall be dipped into soldering flux, and shall be immersed into molten solder of 230 $^{\circ}$ C $\pm$ 5 $^{\circ}$ C for a period 3 $\pm$ 0.5 seconds.	A new uniform coating of solder shall cover a minimum of 95% of the surface being immersed.
2	Resistance to soldering heat	The terminal for a printed circuit board : Temperature of solder : 260 $\pm$ 5 $^{\circ}$ C Dip time : 5 $\pm$ 1 seconds The terminal for a lead wire : Temperature of solder : 350 $\pm$ 10 $^{\circ}$ C Dip time : 3 $\pm$ 1 seconds	Electrical and mechanical characteristics shall be satisfied.
3	Cold	The jack shall be stored at a temperature of -40 $^{\circ}$ C $\pm$ 2 $^{\circ}$ C for 96 hours. And then it shall be subjected to the controlled recovery conditions for 0.5 hours after which measurement shall be made.	Electrical and mechanical characteristics shall be satisfied.
4	Dry heat	The jack shall be stored at a temperature of 70 $^{\circ}$ C $\pm$ 2 $^{\circ}$ C for 96 hours. And then it shall be subjected to the controlled recovery conditions for 0.5 hours after which measurement shall be made.	There shall be not show remarkable failure.
5	Humidity	The Pin Jack shall be subject to 90% ~95%RH, 40 $^{\circ}$ C $\pm$ 2 $^{\circ}$ C for 96 hours, and shall then be conditioned at room ambient conditions for a period of 30 minutes.	Electrical and mechanical characteristics shall be satisfied. Insulation resistance : 50M $\Omega$ MIN. Contact resistance : 50m $\Omega$ MAX.

# ***SWEETA PRODUCTS CORPORATION***

## ***SPECIFICATION***

<b>TITLE</b> DC POWER JACK	<b>SPC. NO.</b> SHD-1320-SMD	<b>PAGE : 3 OF 4</b> <b>DATE : 2013.04.08</b>
-------------------------------	---------------------------------	--

	Item	Conditions	Specification
6	Life test	Insertion and withdrawal shall be made with the mating plugs and jacks for 5000 cycles at a speed of 10~30 cycles/min.	Insertion force : 29.4N MAX ( 3Kgf ) Withdrawal force : 2.94~29.4N ( 0.3~3kgf ) Contact resistance : Between plug and contact : 100mΩ MAX. Each closed contact : 60mΩ MAX.

### 6.Warning:

Dc power jack shall be dipped, warning to inferior contact by flux and transform mold.

Resistance to flux : It shall be prevention between PCB and housing.

Transform mold : It must not add direct heat to Dc power jack

Temperature of solder : 255℃ MAX.

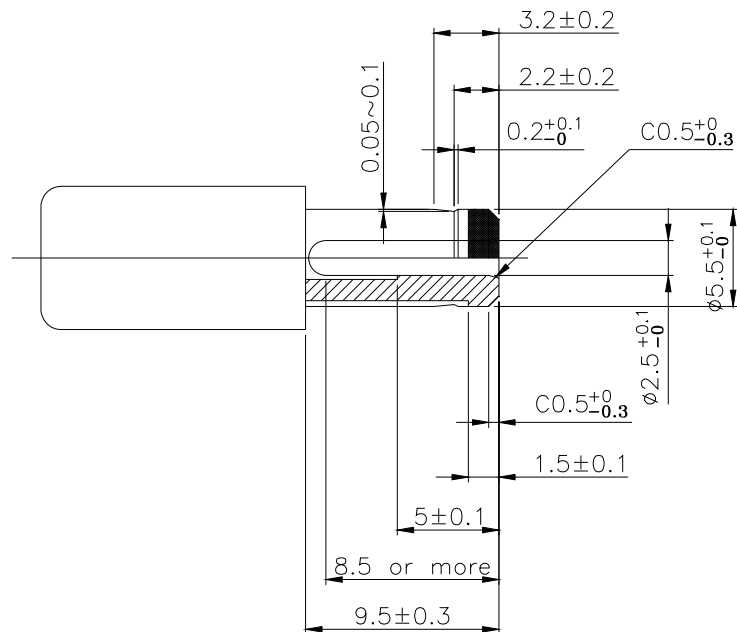
Preheat temperature : 90℃ MAX.

Preheat time : 2 minute MAX.

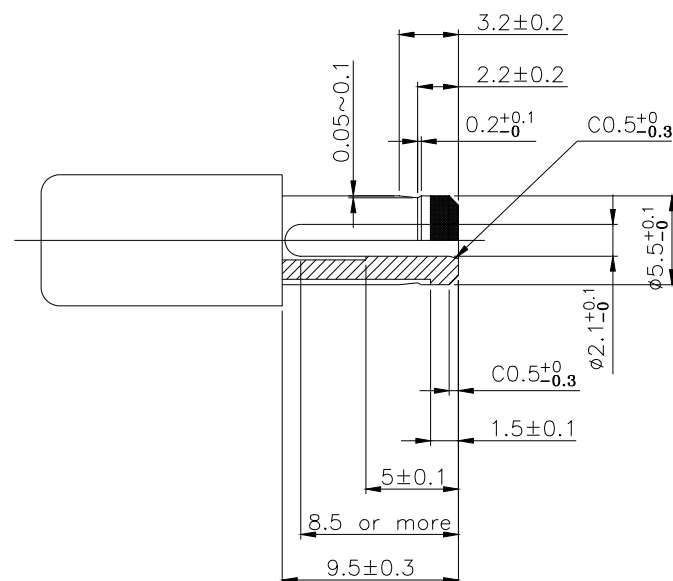
***SWEETA PRODUCTS CORPORATION***  
***SPECIFICATION***

<b>TITLE</b> DC POWER JACK	<b>SPC. NO.</b> SHD-1320-SMD	<b>PAGE : 4 OF 4</b> <b>DATE : 2013.04.08</b>
-------------------------------	---------------------------------	--

## 7. Mating plug dimension



## Ø2.0 PLUG



Ø2.5 PLUG